

IT'S TIME TO ENROLL

GET TO KNOW
YOUR VSP VISION
BENEFITS



Ivinson Memorial Hospital
Effective January 1, 2021



SEE WELL. BE WELL.™



CARE

As a health-focused company, your well-being is at the core of everything we do. Eye care is essential to your overall health.



SAVINGS

With VSP®, your family can rely on additional savings and offers to get the care you need at low out-of-pocket costs.



ACCESS

From private practice doctors to retail chain locations, VSP is here to help you with safe, convenient access to local eye doctors.

EYE CARE IS ESSENTIAL.

Even if you have 20/20 vision, it's important for you to get an eye exam every year. Why? Well, an eye exam is about more than just seeing clearly.

DID YOU KNOW?

Eye exams provide an unobstructed view of the blood vessels and can help detect early signs of serious eye and health conditions like glaucoma, diabetes, high cholesterol, and high blood pressure.

- Nearly **88 million** US adults are living with **prediabetes** and **85%** don't know they have it. Early signs can be detected with an eye exam and regular eye exams can reduce the risk of diabetes related vision loss **by 95%**¹



VSP PRIMARY EYECARE PLANSM

Get the medical eye care you need, while avoiding trips to the emergency room.

HERE'S WHAT'S COVERED.

- Treatment for dry eye, pink eye, eye injury, and foreign body removal
- Tests to diagnose sudden vision changes
- Fully covered retinal screening for members with diabetes who do not have diabetic eye disease
- Exams and services to diagnose and monitor glaucoma and cataracts



SAVE ON THE EYEWEAR YOU NEED

- 75% of adults use some sort of vision correction
- About 64% of them wear eyeglasses
- 11% wear contact lenses, either exclusively, or with glasses
- Over half of all women and about 42% of men wear glasses¹

As a VSP member through Iverson Memorial Hospital, you'll save an average of \$496 on the eye care and eyewear you need to keep yourself healthy and see your best.

SAVINGS NEVER LOOKED SO GOOD

Here’s an example of your potential savings as an individual when you receive an eye exam and get new prescription glasses. **Families save even more!**

	Without VSP	With VSP Coverage
Eye Exam	\$185	\$20
Frame	\$130	\$20
Bifocal Lenses	\$151	
Premium Progressive Lenses	\$258	\$150
Anti-glare Coating	\$146	\$85
Member-only Annual Contribution	N/A	\$98.40
Total	\$870	\$373.40

YOUR AVERAGE ANNUAL SAVINGS WITH VSP

\$496.60

Comparison based on national averages for eye exams and most commonly purchased brands.



FAMILIES SAVE EVEN MORE

Member	Choice	Savings
VSP Member	Prescription Glasses	\$331
Spouse	Prescription Glasses	\$462
1 st Child	Prescription Glasses	\$544
2 nd Child	Contact Lenses	\$205

TOTAL POTENTIAL SAVINGS: \$1542

YOUR VSP PLAN AT A GLANCE

	Choice
Exam	<ul style="list-style-type: none">WellVision Exam[®] covered every calendar year after \$20 copay
Frame Allowance	\$130 Frame allowance every other calendar year for a frame of your choice
Lenses	<ul style="list-style-type: none">Single vision, lined bifocal or lined trifocal lenses for adults after \$20 copay for glassesImpact-resistant lenses for children covered after \$20 copay for glassesevery calendar year
Lens Enhancements	<ul style="list-style-type: none">Standard Progressive lenses are fully covered in full30% savings on lens enhancements—scratch-resistant, UV, anti-glare coatings
Contact Lens Allowance (in lieu of glasses)	\$130 allowance for contacts lenses and copay up to \$60 for contacts lens exam (fitting and evaluation)
Primary Eyecare Program	Treatment and diagnosis of eye conditions like pink eye, vision loss and monitoring of cataracts, glaucoma and diabetic retinopathy. Limitations and coordination with medical coverage may apply. Ask your VSP doctor for details
Retinal Screening	No more than a \$39 copay on routine retinal screening as an enhancement to a WellVision Exam.
Your Monthly Contribution	\$8.36 Member Only, \$13.38 Member + 1, \$13.66 Member + children, \$22.02 Member + Family

CONVENIENT ACCESS TO DOCTORS

GET THE CARE YOU DESERVE.

It's about choice. On average, there are five VSP network doctors within six miles. So, no matter where you live, you have convenient access to a network eye doctor who can give your eyes the care and attention you deserve.

Maximize your benefits at a Premier Program location (at no extra cost) now including **thousands of private practice doctors**—and new this year—over **700 Visionworks** retail locations nationwide.

- Exclusive bonus offers and savings
- A wide selection of featured frame brands
- Advanced eye exam technology, like retinal imaging



EXCLUSIVE MEMBER EXTRAS

GET THE SAVINGS YOU NEED.

With **Exclusive Member Extras**, savings never looked so good. VSP puts members first by providing you with exclusive special offers from leading industry brands, totaling access to more than **\$3,000 in savings**. Discover great deals on glasses, sunglasses, contact lenses, and more.



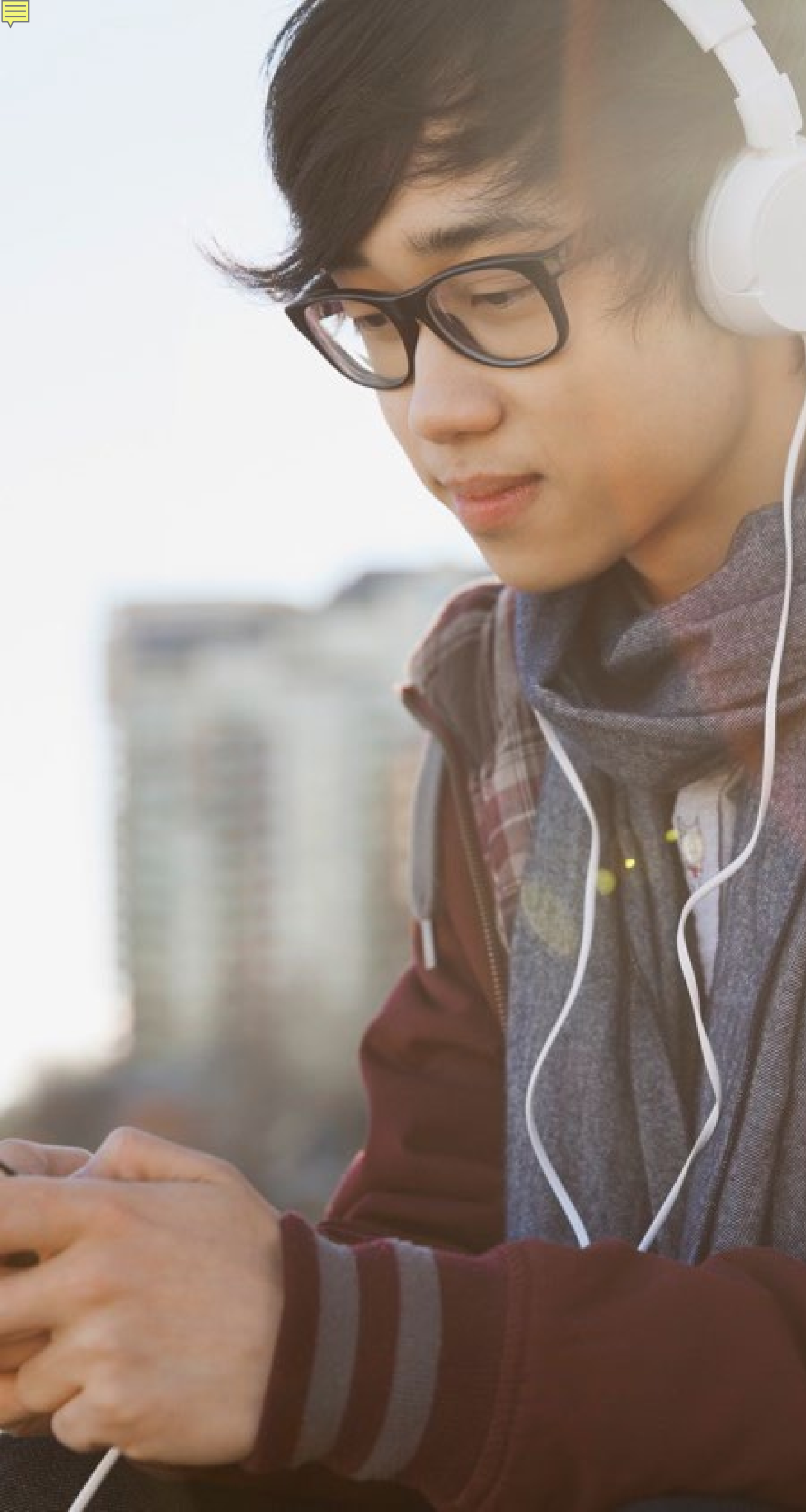
Enjoy an Extra \$20 on Featured Frame Brands.



Save up to 40% on popular lens enhancements.

*Offers vary based on benefit plan. Brands subject to change.





USING YOUR BENEFIT IS EASY.

Once you're enrolled...

- Create an account at **vsp.com** and review your personalized benefit information.
- Find a VSP in-network doctor by visiting **vsp.com** or calling **800.877.7195**.
- At your appointment, simply tell them you have VSP. No ID card needed—and we'll take care of the rest! There are no claim forms to fill out when you see a VSP network doctor.

ENROLL TODAY!

VSP helps you see well and be well with the coverage and quality care you deserve.

Questions? Contact us.
Call 800.877.7195

